

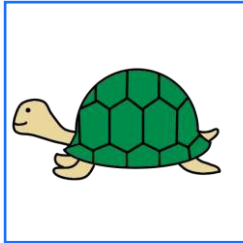
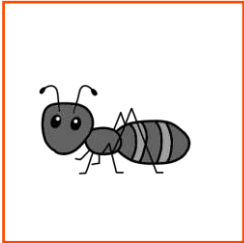
おとのくみあわせ

なまえ

ひだりのもののなまえの**はじめ**のおとと **みぎ**のもののなまえの**おわり**のおとをくみあわせてできるものをせんでむすびましょう。

ひだり

みぎ



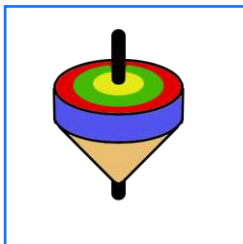
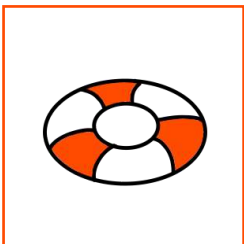
あり

かめ



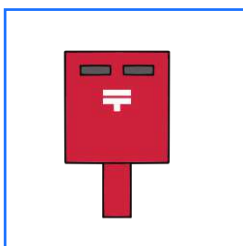
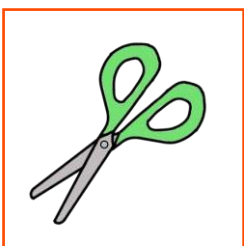
えのぐ

ゆき



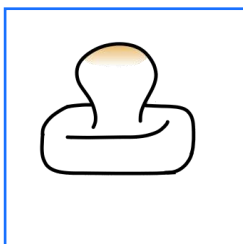
うきわ

こま



はさみ

ぼすと

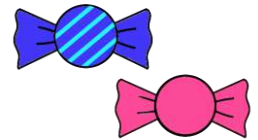


くるま

もち



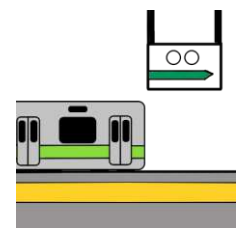
はと



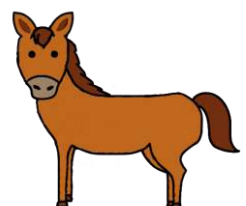
あめ



くち



えき



うま